

PART OF SEC. 29-30, T.7N., R.3E., S.L.B. & M.  
**EVERGREEN PARK SUBDIVISION NO. 1**

TAXING UNIT: 520

IN WEBER COUNTY

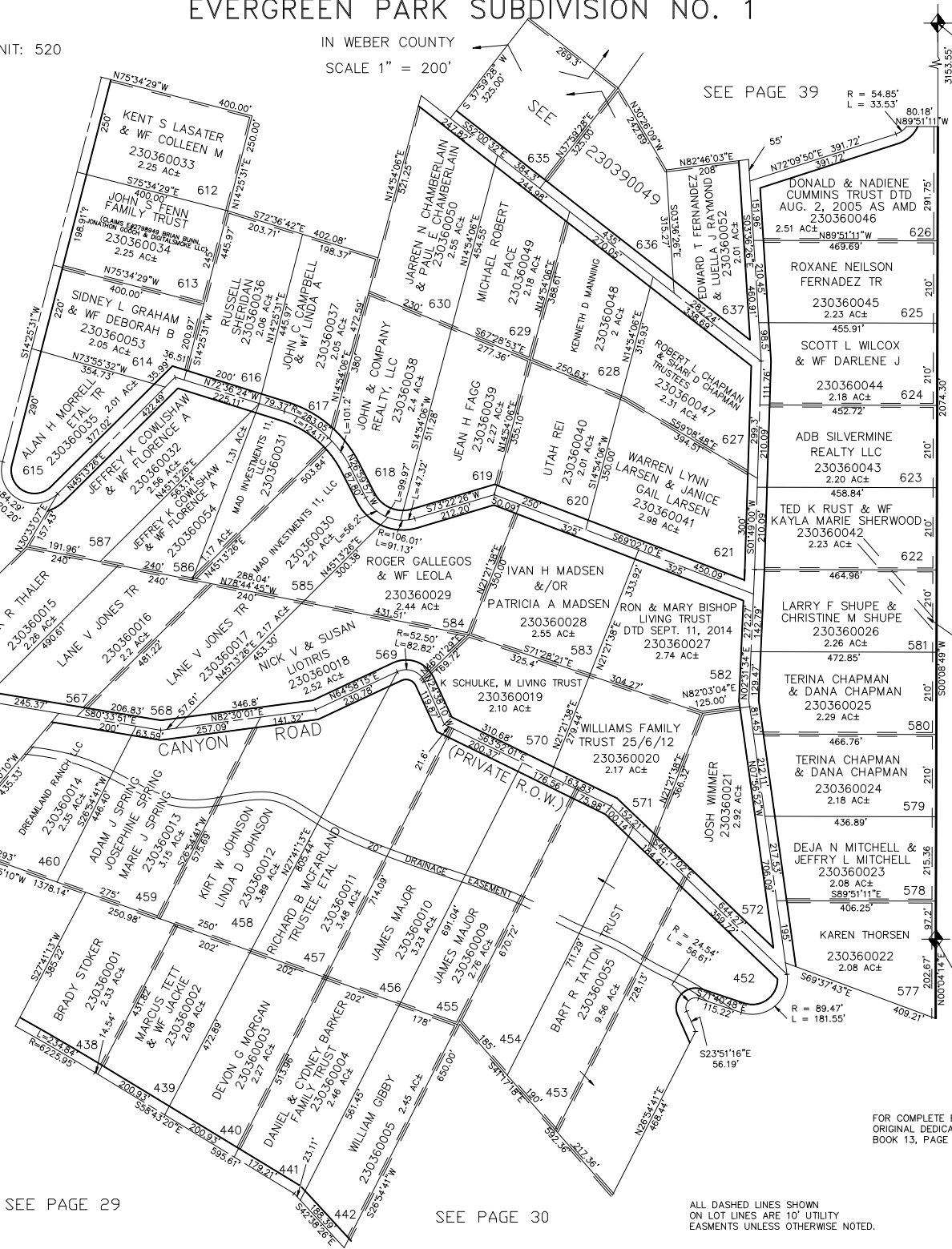
SCALE 1" = 200'

SEE PAGE 39

N.E. COR. SEC. 29  
 T. 7N., R. 3E.

SEE PAGE 34

SEE PAGE 15



FOR COMPLETE ENG DATA SEE ORIGINAL DEDICATION PLAT IN BOOK 13, PAGE 54 OF RECORDS.

ALL DASHED LINES SHOWN ON LOT LINES ARE 10' UTILITY EASEMENTS UNLESS OTHERWISE NOTED.

SEE PAGE 29

SEE PAGE 30